

FICHE D'HOMOLOGATION HOMOLOGATION FORM



COMMISSION INTERNATIONALE
DE KARTING – FIA



CARBURATEUR / CARBURETTOR

| | | |
|-------------------------|-------------------------------------|-----------------|
| Constructeur | <i>Manufacturer</i> | VHM |
| Marque | <i>Make</i> | VHM |
| Modèle | <i>Model</i> | J3 |
| Catégorie | <i>Category</i> | KF3 |
| Durée de l'homologation | <i>Validity of the homologation</i> | 9 ans / 9 years |
| Nombre de pages | <i>Number of pages</i> | 2 |

La présente Fiche d'Homologation reproduit descriptions, illustrations et dimensions du carburateur au moment de l'homologation CIK-FIA. Le Constructeur a la possibilité de les modifier seulement dans les limites fixées par le règlement CIK-FIA en vigueur.

This Homologation Form reproduces descriptions, illustrations and dimensions of the carburettor at the moment of the CIK-FIA homologation. The Manufacturer may modify them, but only within the limits fixed by the CIK-FIA regulations in force.

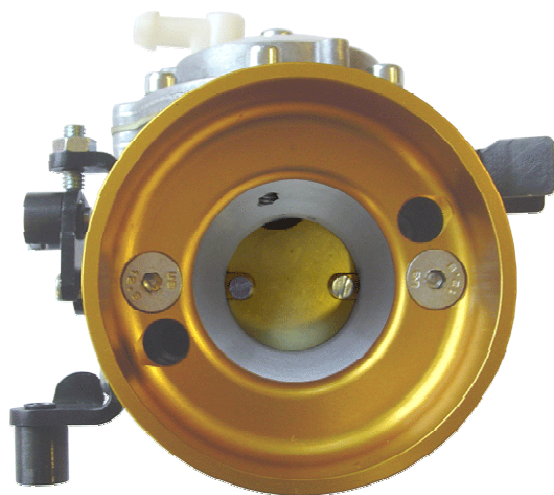


PHOTO CÔTÉ ASPIRATION
PHOTO OF INLET SIDE

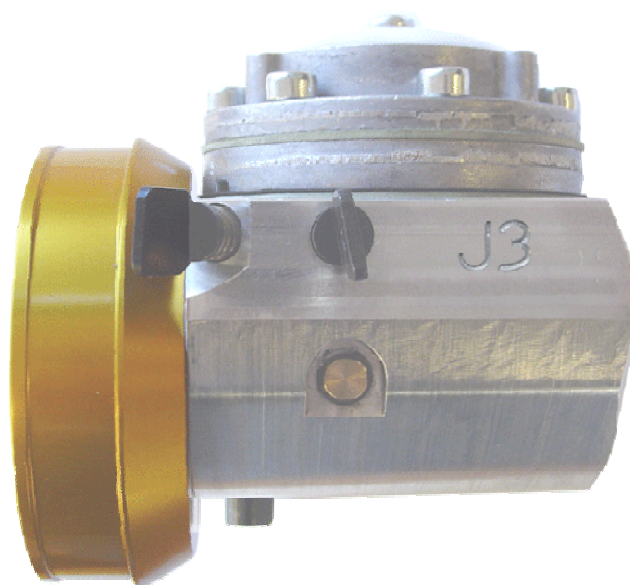


PHOTO CÔTÉ RÉGLAGE
PHOTO OF ADJUSTING SIDE

Signature et tampon de l'ASN
Signature and stamp of the ASN



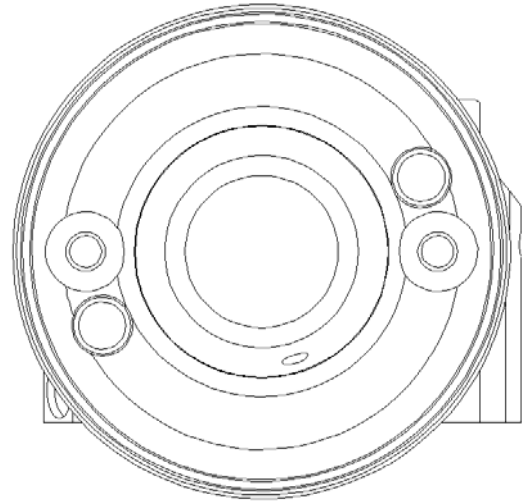
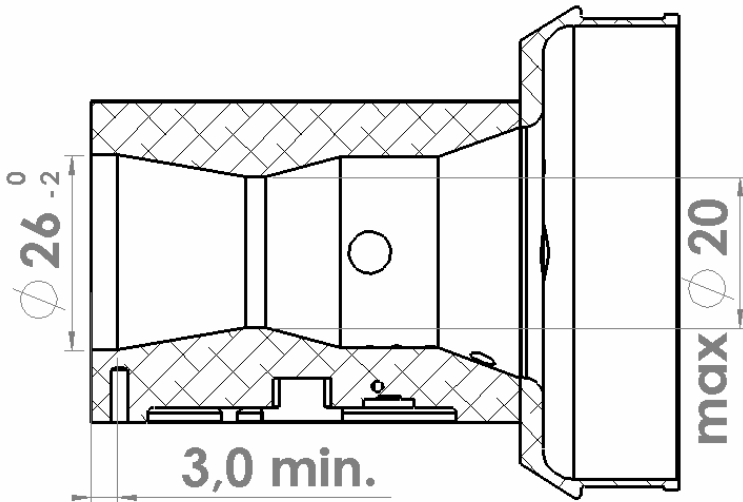
Signature et tampon de la CIK-FIA
Signature and stamp of the CIK-FIA



VUE EN SECTION
CONDUIT D'ASPIRATION
INLET PORT SECTION VIEW

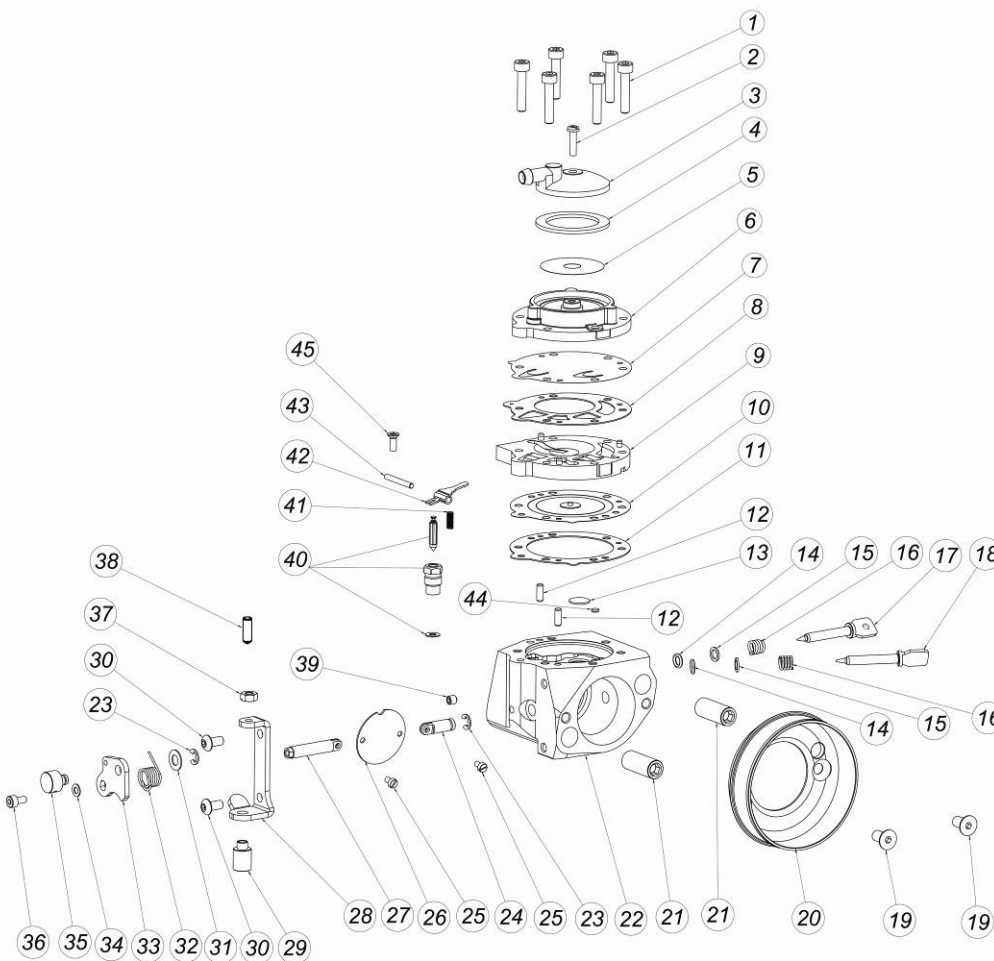
VUE DE FACE
CÔTÉ ASPIRATION
INLET SIDE FRONT VIEW

Echelle 1:1 / 1:1 Scale



DESCRIPTION DU CARBURATEUR ET
ESQUISSE DES PIÈCES

CARBURETTOR DESCRIPTION AND
SKETCH OF PARTS



| ITEM NO. | PART NO. | DESCRIPTION |
|----------|----------|-----------------------------|
| 1 | CAO6058 | Fuel pump screw |
| 2 | CAO6065 | Fuel strainer cover screw |
| 3 | CAO6038 | Fuel strainer cover |
| 4 | CAO6030 | Cork gasket fuel connection |
| 5 | CAO6029 | Fuel filter |
| 6 | CAO6025 | Fuel pump body |
| 7 | CAO6027 | Fuel pump diaphragm |
| 8 | CAO6023 | Gasket fuel pump |
| 9 | CAO6024 | Diaphragm body |
| 10 | CAO6068 | Diaphragm |
| 11 | CAO6026 | Gasket diaphragm |
| 12 | CAO6056 | Centre pin |
| 13 | CAO6042 | Slow jet cover |
| 14 | CAO6020 | O-ring |
| 15 | CAO6019 | Brass washer jet screw |
| 16 | CAO6028 | Jet screw spring |
| 17 | CAO6092 | Low speed mixture screw |
| 18 | CAO6093 | High speed mixture screw |
| 19 | CAO6062 | Air filter connection screw |
| 20 | CAO6085 | Connection flange |
| 21 | CAO6043 | Carburettor nut |
| 22 | J3 | Carburettor body |
| 23 | CAO6060 | Circlip |
| 24 | CAO6087 | Throttle shaft 1 |
| 25 | CAO6094 | Throttle butterfly screw |
| 26 | CAO6091 | Throttle butterfly |
| 27 | CAO6089 | Throttle shaft 2 |
| 28 | CAO6046 | Cable bracket |
| 29 | CAO6066 | Cable cover |
| 30 | CAO6054 | Bracket bolt |
| 31 | CAO6061 | Washer |
| 32 | CAO6017 | Throttle butterfly spring |
| 33 | CAO6045 | Throttle lever |
| 34 | CAO6076 | Washer |
| 35 | CAO6049 | Cable holder |
| 36 | CAO6075 | Cable bolt |
| 37 | CAO6077 | Bracket nut |
| 38 | CAO6053 | Throttle lever bolt |
| 39 | CAO6063 | Socket screw |
| 40 | CAO6032 | Inlet needle seat complete |
| 41 | CAO6031 | Inlet tension spring |
| 42 | CAO6036 | Fulcrum |
| 43 | CAO6037 | Fulcrum pin |
| 44 | CAO6096 | Jet cover main |
| 45 | CAO6050 | Fulcrum pin screw |