

FICHE D'HOMOLOGATION HOMOLOGATION FORM



COMMISSION INTERNATIONALE
DE KARTING – FIA



CARBURATEUR / CARBURETTOR

| | | |
|-------------------------|-------------------------------------|--------------------------------------|
| Constructeur | <i>Manufacturer</i> | BOLEX CARBURETTOR, BOLLHALDER |
| Marque | <i>Make</i> | BOLEX |
| Modèle | <i>Model</i> | B3 |
| Catégorie | <i>Category</i> | KF2 |
| Durée de l'homologation | <i>Validity of the homologation</i> | 9 ans / 9 years |
| Nombre de pages | <i>Number of pages</i> | 2 |

La présente Fiche d'Homologation reproduit descriptions, illustrations et dimensions du carburateur au moment de l'homologation CIK-FIA. Le Constructeur a la possibilité de les modifier seulement dans les limites fixées par le règlement CIK-FIA en vigueur.

This Homologation Form reproduces descriptions, illustrations and dimensions of the carburettor at the moment of the CIK-FIA homologation. The Manufacturer may modify them, but only within the limits fixed by the CIK-FIA regulations in force.



PHOTO CÔTÉ ASPIRATION
PHOTO OF INLET SIDE

PHOTO CÔTÉ RÉGLAGE
PHOTO OF ADJUSTING SIDE

Signature et tampon de l'ASN
Signature and stamp of the ASN

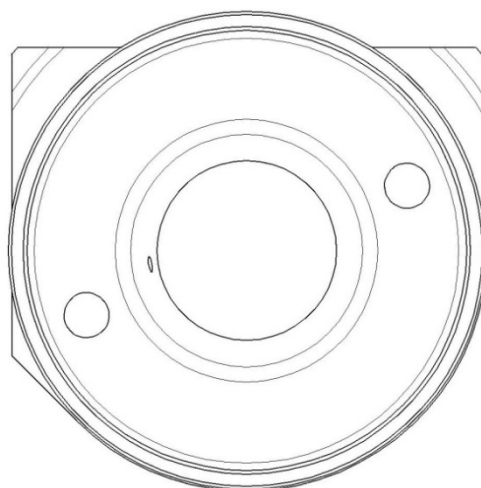
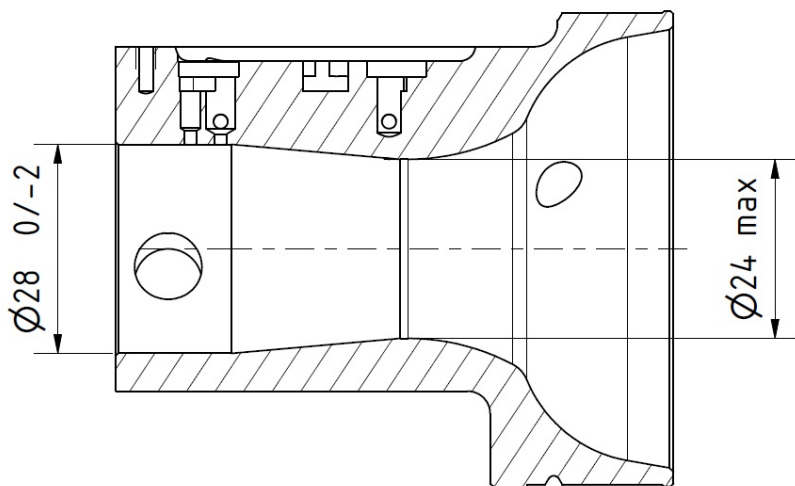
Signature et tampon de la CIK-FIA
Signature and stamp of the CIK-FIA



VUE EN SECTION
CONDUIT D'ASPIRATION
INLET PORT SECTION VIEW

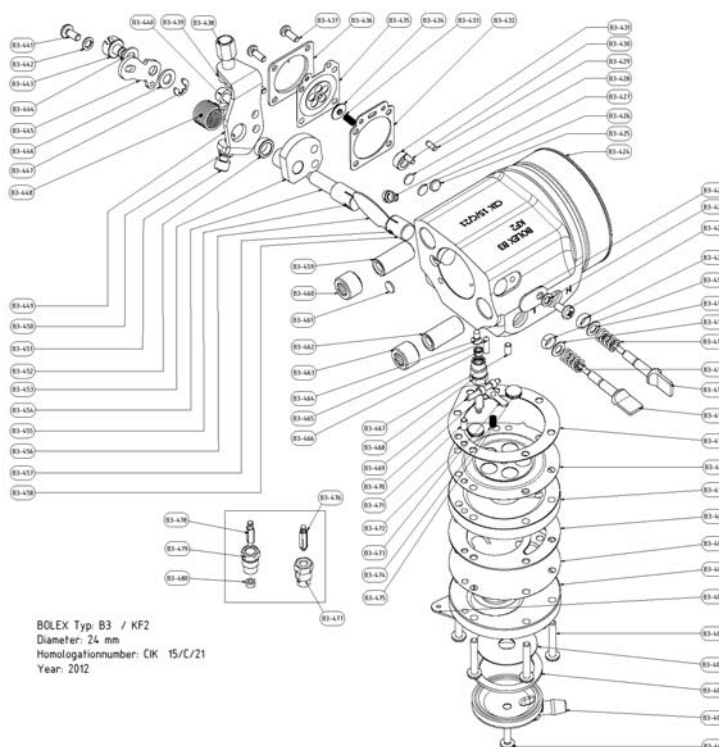
VUE DE FACE
CÔTÉ ASPIRATION
INLET SIDE FRONT VIEW

Echelle 1:1 / 1:1 Scale



DESCRIPTION DU CARBURATEUR ET
ESQUISSE DES PIÈCES

CARBURETTOR DESCRIPTION AND
SKETCH OF PARTS



| | |
|--------|---|
| 03-441 | Fuel Strainer Cover Screw |
| 03-442 | Fuel Strainer Cover |
| 03-443 | Fuel Strainer Basket |
| 03-444 | Fuel Strainer Screen |
| 03-445 | Fuel Pump Screw & Pin |
| 03-446 | Spring Hook |
| 03-447 | Fuel Pump Body |
| 03-448 | Fuel Pump Diaphragm |
| 03-449 | Fuel Pump Gasket |
| 03-450 | Diaphragm Cover, 102, 2 Pins Of Locking Disc |
| 03-451 | Mixing Diaphragm |
| 03-452 | Mixing Diaphragm Gasket |
| 03-453 | Low Speed Mixture Screw L |
| 03-454 | High Speed Mixture Screw H |
| 03-455 | Low Speed Mixture Screw Spring |
| 03-456 | High Speed Mixture Screw Spring |
| 03-457 | Low Speed Mixture Screw Washer |
| 03-458 | High Speed Mixture Screw Washer |
| 03-459 | Low Speed Mixture Screw Packing |
| 03-460 | High Speed Mixture Screw Packing |
| 03-461 | Jetting Screw |
| 03-462 | Lockwasher |
| 03-463 | Hexalite Shaft Clip |
| 03-464 | Carbonifer Body Complete |
| 03-465 | Strainer Screen |
| 03-466 | Cap |
| 03-467 | Regulating Screw With Bore Diameter Between 0.8 To 2 mm |
| 03-468 | Cap |
| 03-469 | Locking Nut |
| 03-470 | Locking Nut |
| 03-471 | Spring |
| 03-472 | Locknut Hexagonal Diaphragm |
| 03-473 | Spring |
| 03-474 | Locking Nut |
| 03-475 | Mixing Diaphragm Assembly |
| 03-476 | Mixing Lever |
| 03-477 | Cover Screw, 4 Pcs |
| 03-478 | Locking Screw |
| 03-479 | Nut |
| 03-480 | Screw, 2 Pcs |
| 03-481 | Spring |
| 03-482 | Lockwasher |
| 03-483 | Locknut |
| 03-484 | Washer |
| 03-485 | Shaft Lever |
| 03-486 | Washer |
| 03-487 | Locking Nut |
| 03-488 | Locking Pin |
| 03-489 | Spring |
| 03-490 | Hexalite |
| 03-491 | Pin |
| 03-492 | Hexalite |
| 03-493 | Pin |
| 03-494 | Shaft Nut |
| 03-495 | Hexagonal Sleeve Nut |
| 03-496 | Friction Nut |
| 03-497 | Friction Nut |
| 03-498 | Friction Nut |
| 03-499 | Friction Nut |
| 03-500 | Steel Control Lever Fabric Screw |
| 03-501 | Steel Nut |
| 03-502 | Steel Washer Gasket |
| 03-503 | Locking Pin |
| 03-504 | Steel Needle Seat O/S |
| 03-505 | Steel Control Lever Fabric Pin |
| 03-506 | Steel Needle O/S |
| 03-507 | Locking Pin |
| 03-508 | Cover |
| 03-509 | Steel Needle With Rubber Tip - Optional |
| 03-510 | Steel Nut - Optional |
| 03-511 | Steel Needle O/S - Optional |
| 03-512 | Steel Sleeve O/S - Optional |
| 03-513 | Steel Needle Gasket - Optional |

BOLEX Typ. B3 / KF2
Diameter: 24 mm
Homologationnumber: CK 15/C/21
Year: 2012